

Village Of North Aurora

RECYCLING COLLECTION GUIDELINES

GENERAL PROVISIONS

- ▲ Stickers are not required on recycling containers.
- ▲ There is no limit to the number of recycling containers that you may set out for collection.
- ▲ Additional recycling containers may be purchased from Waste Management by calling Customer Service at 1-800-796-9696; Waste Management will deliver your new container to your home.
- ▲ Please write your name on your recycling container(s) to help in recovery if lost or stolen.
- ▲ Paper items need to be separated from commingled items by being placed in paper grocery type bags and placed at the bottom of the recycle bin to help -avoid the blowing of paper.
- ▲ Do not place recyclable materials in plastic bags.
- ▲ All recyclable materials should be rinsed free of food with caps/lids removed.
- ▲ Cardboard must be cut into 2' x 2' squares.

PREPARATION OF MATERIALS



Metal Items

- ▲ Aluminum cans, foil and formed containers
 - ▲ Steel or tin cans
- NO scrap metal*

Glass Items

- ▲ Bottles and jars only
 - ▲ Brown, green and clear glass
- NO mirrors, window glass, Pyrex dishes, or light bulbs*



Plastic Items

PET (#1) Plastic Bottles and Rigid Containers

- ▲ 1 & 2 liter soda bottles
- ▲ plastic flower pots
- ▲ plastic plates & trays

HDPE (#2) Plastic Bottles and Rigid Containers

- ▲ laundry detergent containers
 - ▲ milk & water bottles
 - ▲ margarine tubs
 - ▲ baby wipe containers
 - ▲ plastic cups
 - ▲ other non-bottle shaped containers
- NO motor oil, anti-freeze, pool chemicals, or hazardous waste containers*
NO containers larger than one gallon



PVC (#3) Plastic Bottles and Rigid Containers

- ▲ cooking oil bottles
- ▲ shampoo bottles

LDPE (#4) Plastic Bottles and Rigid Containers

- ▲ squeeze mustard bottles
- ▲ shampoo bottles

PP (#5) Plastic Bottles and Rigid Containers

- ▲ deli containers
- ▲ cosmetic containers

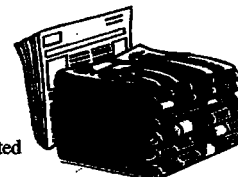
Paper Items

Newspaper

- ▲ all inserts accepted

Magazines and Catalogs

- ▲ glossy and non-glossy accepted



Telephone Directories

Kraft Brown Paper Bags

Corrugated Cardboard

- ▲ cardboard must be cut into 2' x 2' squares

Paperboard (Chipboard)

- ▲ cereal boxes
- ▲ tissue boxes
- ▲ pasta boxes
- ▲ clothing boxes



Wet Strength Carrier Stock

- ▲ frozen food packages
- ▲ carriers for soda and beer

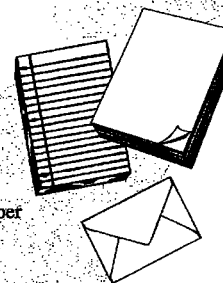
Junk Mail

- ▲ brochures
- ▲ greeting cards
- ▲ window envelopes
- ▲ flyers
- ▲ postcards
- ▲ advertisements



Mixed Paper

- ▲ stationary
- ▲ post-it notes
- ▲ typing paper
- ▲ notebook paper
- ▲ computer and copy paper
- ▲ bond envelopes



Household Batteries

- ▲ Must be placed in a sandwich bag and placed next to recycle bin.

Service Inquiries

Residents with questions regarding the refuse, recycling and yardwaste service or experience any problems can contact Waste Management directly at 1-800-796-9696.



Waste Management
780 N. Kirk Road
Batavia, IL 60510
1-800-796-9696



SERVICE INQUIRIES

If you should have any questions regarding your curbside collection service or if you should experience any collection problem, please contact Waste Management at 1-800-796-9696.

TOTER SERVICE

96-gallon toter service for the collection of Household Refuse will be available.

The use of Refuse stickers is not required for everything placed in the toter. Discarded items stacked on top of the toter without a proper sticker will not be collected. To arrange Toter service contact Waste Management at 1-800-796-9696.

REFUSE COLLECTION GUIDELINES

General Provisions

- ▲ Collection days will remain the same.
- ▲ Household refuse and yardwaste will be collected between 6:00 AM and 6:00 PM on your scheduled collection day. Please have all items (refuse, recycling, and yardwaste) out by 6:00 AM. Separate trucks on different schedules pick up refuse, recycling, and yardwaste, so each of these discarded materials may be picked up at different times of the day.
- ▲ Items for collection may be placed at the curb after 7:00 PM on the day before your scheduled pick up. Residents must remove containers from the curb by 7:00 PM on the day of collection.
- ▲ Collection shall be once a week for each residential dwelling unit. Scheduled pick up days that fall on or after a legal holiday shall be on day late following the holiday that week. For the purpose of this contract the following holidays will be observed:

| | |
|------------------|------------------|
| New Year's Day | Labor Day |
| Memorial Day | Thanksgiving Day |
| Independence Day | Christmas Day |
- ▲ All containers/bags, excluding recycling containers, must have a proper sticker for collection.

Household Waste Collection

- ▲ Maximum 32-gallon container/bag.
- ▲ 50 pound weight limit per container/bag.

- ▲ One (1) refuse sticker per 32-gallon container/bag. Refuse stacked on top of the container without a proper sticker will not be collected.
- ▲ Do not mix household refuse with yardwaste. Mixed refuse and yardwaste cannot be collected.
- ▲ Bulk items:
 - ▼ Bulk items that are too large to fit into an approved 32-gallon container/bag, (discarded toys, crates, barrels, small tables, small chairs, etc.) weighing less than 50 pounds will require one (1) refuse sticker for each bulk item to be collected.
 - ▼ Heavy bulk items that are too large to fit into an approved 32-gallon container/bag, (discarded mattresses, dressers, sofas, large chairs, etc.) weighing more than 50 pounds will require three (3) refuse stickers for each bulk item to be collected.
- ▲ Carpet Rolls:
 - ▼ Carpet rolls must be no greater than 4 feet in length and 18 inches in diameter and weighing less than 50 pounds will require one (1) refuse sticker for each roll for collection.
 - ▼ Heavy carpet rolls must be no greater than 4 feet in length and 18 inches in diameter and weighing more than 50 pounds will require three (3) refuse sticker for each roll for collection.
- ▲ Appliances containing CFC or HCFC, PCB's, Mercury switches or other hazardous components (refrigerators, freezers, air conditioners, humidifiers, etc.) will require three (3) refuse stickers to be collected. A separate truck will collect white goods in order for them to be processed in accordance with State Law.
- ▲ Do it yourself construction or demolition debris (Small quantities) to be collected will require one (1) refuse sticker per bundles or 32-gallon container. Do it yourself construction or demolition debris must be placed either in bundles weighing less than 50 pounds, up to four (4) feet in length and up to 18 inches in diameter, or placed in 32-gallon containers weighing up to 50 pounds to be collected. Each bundle or container will require one (1) refuse sticker for collection.
- ▲ Special Collections: One (1) cubic yard shall be the minimum amount of refuse required for a special collection. The Contractor shall advise the resident directly of the terms of special collections; i.e. what materials will be collected; how the materials will be prepared; the date of collection; the policy of providing advance estimates of charges. Special collection will be

COD. Contact Waste Management Customer Service for details at 1-800-796-9696

- ▲ Household products that are flammable, toxic, corrosive, or reactive can pose a harmful threat or damage the environment when disposed of improperly. Items like waste paint, pesticides, poisons, cleaning solvents, household batteries, tainted gasoline, used oil, and other automobile fluids are considered to be Household Hazardous Waste, (HHW), and should not be included with your refuse for disposal.

Yardwaste Collection

- ▲ Yardwaste is collected at the curb from the first of April through the end of November.
- ▲ Grass clippings, brush, plant materials and weeds require a yard waste sticker for disposal.
- ▲ Maximum 33-gallon biodegradable Kraft paper bag, (plastic bags are not acceptable for yardwaste or leaves).
- ▲ Maximum 33-gallon biodegradable Kraft paper bag, (plastic bags are not acceptable for yardwaste or leaves). Yardwaste stacked on top of the container without a proper sticker will not be collected.
- ▲ 50 pound weight limit per biodegradable Kraft paper bag and/or bundle.
- ▲ One (1) yardwaste sticker will be required for each biodegradable Kraft paper bag and/or bundle.
- ▲ Brush and tree trimmings must be bundled and tied with biodegradable twine or string in distinct piles that are no longer than 4 feet in length and 18 inches in diameter weighing up to 50 pounds. Each bundle will require a yardwaste sticker visibly attached to it for collection.
- ▲ Christmas trees will be collected from Christmas through the end of January at no charge to residents. During this free period the Christmas trees must be free of all decorations and cannot be in plastic bags. After the free collection period has expired, Christmas trees will require one (1) refuse sticker visibly affixed to be collected.
- ▲ Residents are encouraged to compost landscape waste materials rather than dispose of them at the curb.
- ▲ Free Leaf Collection. Leaves placed in 33-gallon Kraft bags will not require a sticker for collection between October 1st and November 30th.

